



ROOF SYSTEMS

Made of Aluminium



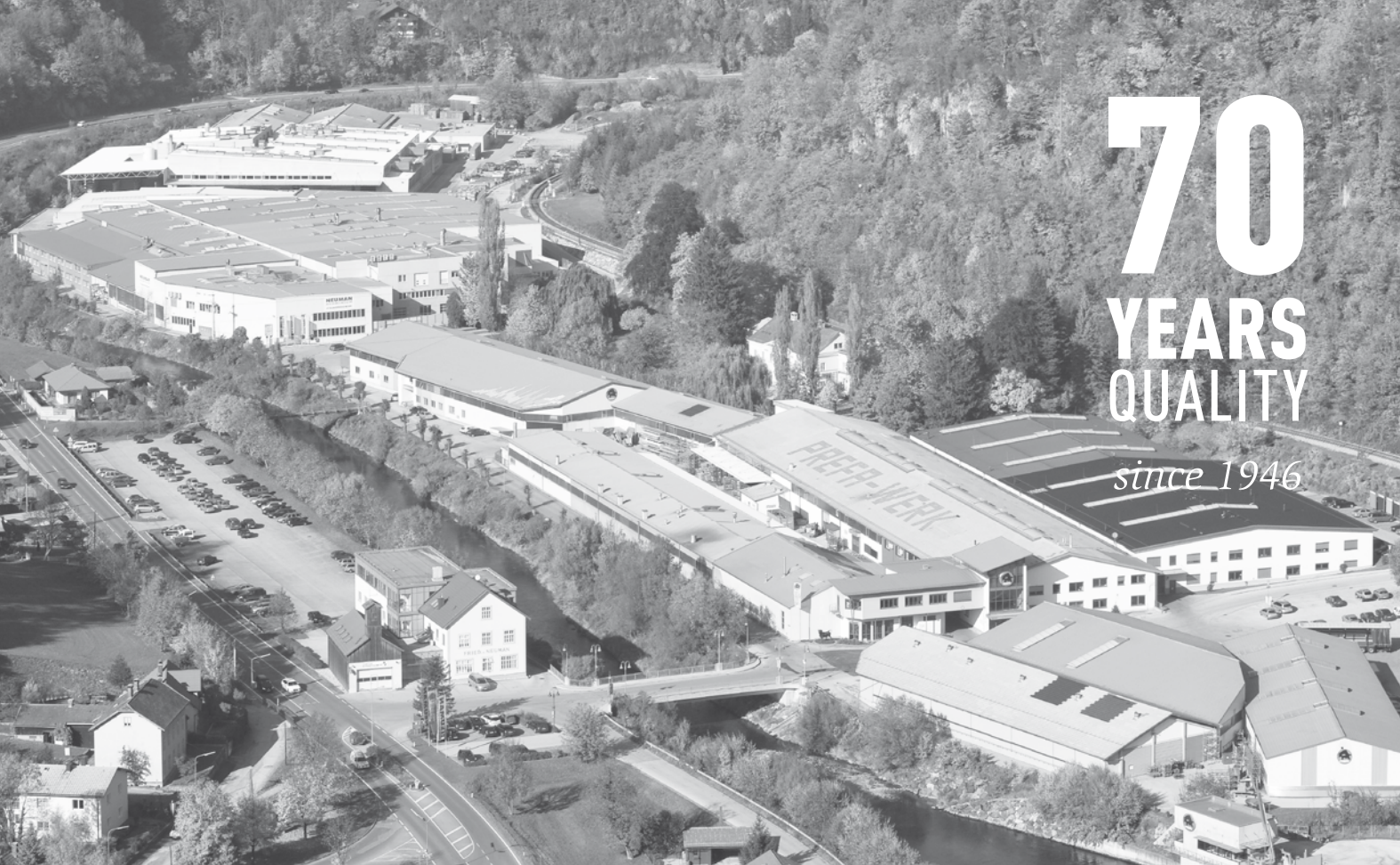
70
YEARS
QUALITY
since 1946



COVER IMAGE
Product: PREFA roof and facade panel FX.12
Colour: stone grey P.10
Location: La Grave, France
Architecture: Atelier 17 C – Architectes
Installation: Altibois

04	PREFA SUCCESS STORY FD.TEC P.10
06	ROOF TILE R.16 NEW!
10	ROOF TILE
14	ROOF RHOMBOID PANEL 44X44 NEW!
18	ROOF RHOMBOID PANEL 29X29
22	SHINGLE
28	ROOF PANEL FX.12
34	PREFALZ (STANDING SEAM)
40	PREFA COLOUR RANGE
42	PREFA PRODUCT RANGE





PREFA SUCCESS STORY

» For 70 years, PREFA has been successful in the development, production and marketing of roof and facade systems made of aluminium. «



FD.TEC FREQUENCY
DAMPING STRIP

PREFA ROOF TILE R.16



FD.TEC ABSORBS THE SOUND'S MOMENTUM

With its unique frequency damper technology FD.TEC, PREFA reduces the unwanted frequency ranges to a minimum and prevents certain sound emissions to a large extent. The FD.TEC frequency damping strips affixed to the back of all small-format PREFA roof elements selectively modify the frequencies that may be caused by rain and hail.

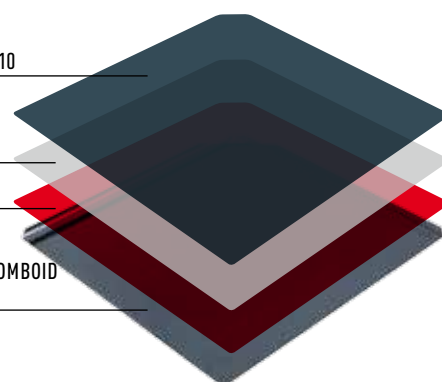


COATING
COIL COATING P.10

PRIMER

PRETREATMENT

PREFA ROOF RHOMBOID
PANEL



P.10 COLOUR-RESISTANT SURFACE

With PREFA P.10, we have developed a surface that meets even the highest quality standards. The PREFA P.10 surface is the ideal complement for many PREFA products. The result is a material that can withstand external influences and pressures and at the same time is incredibly light and stable, providing a wide range of possibilities in planning and execution.

1946 THE FIRST ALUMINIUM ROOF TILE

Tinsmith Gödl from Salzburg invents "PREFA", the roof tile made of aluminium

1955 START OF PRODUCTION IN MARKTL

Production of PREFA is taken over by Fried. v. Neuman Zink- und Aluminium-walzwerk:

1978 THE STOVE-ENAMELLED SURFACE

Market introduction of the stove-enamel finish and the coated aluminium bands

1980 THE SP80 SURFACE

PREFA presents the groundbreaking SP80 paint system in anthracite, brown and dark green

1981 PREFA BECOMES PART OF TUBEX

Fried. v. Neuman is taken over by the Tubex company group under Dr. Cornelius Grupp.

1983 SHINGLES AND SIDINGS

PREFA launches the production of shingles and sidings made of aluminium

1998 WASUNGEN EXPANDS

6 years after start of production, another factory is opened in Wasungen/Germany

2001 "THE ROOF STRONG AS A BULL!"

From 2001 on, the PREFA brand is successfully marked by the distinctive logo and slogan

2004 EXPANSION OF EUROPEAN DISTRIBUTION

In the year 2004, PREFA establishes sales companies in Italy, the Czech Republic, Hungary and Poland

2005 PREFA ACADEMY MARKTL

PREFA offers comprehensive know-how about products, technology, installation and much more in the training centre

2010 THE P.10 SURFACE

The surface PREFA P.10 meets the highest architectural standards

2012 ROOF AND FACADE PANEL FX.12

Using the innovative FX.12, PREFA realizes the ideal combination of aesthetics and protection

2015 PREFA SQUARE PIPE

PREFA presents a completely new form language in roof drainage

2016 ROOF TILE R.16 | ROOF AND FACADE RHOMBOID PANEL 44x44

The PREFA innovations combine the aesthetics of larger formats with significantly optimized handling during installation



ROOF TILE R.16

Realizing
New Perspectives

Product: PREFA roof tile R.16
Colour: anthracite P.10
Montage



Pure Design in Longitudinal Format

PREFA aluminum roof tiles stand for the highest quality standards in stability and durability together with a timelessly clear-cut form language. With the new roof tile R.16, PREFA has developed a reduced roof design that provides maximum freedom in the realization of a distinctive architecture: Thanks to the large format of 70 cm element length, it is now possible to cover the roof with 3-4 roof panels per square metre while at the same time achieving extraordinary aesthetic effects.

TECHNICAL DATA PREFA ROOF TILE R.16

Material	coated aluminium, 0.7 mm thick two-layer stove enamel finish or powder coating according to RAL or NCS
Size	700 x 420 mm in the installed area
Weight	2.5 kg/m²
Roof pitch	from 17° = 31%
Supporting construction and separating layer	on full boarding at least 24 mm; from 17–25°, a separating layer is required, from snow loads of 3.25 kN/m² (CH: reference height 925 m) on or in the terrain categories 0, I or II, an installation on full boarding with bitumen separation layer is required
Fixing	directly, with 3 PREFA threaded nails 28/25



Product: PREFA roof tile R.16
Colour: anthracite P.10
Montage





ROOF TILE

A Design Classic
of Tomorrow

Completely Rethinking the Familiar

Innovation meets tradition: The low-maintenance aluminium tiles developed by PREFA lend a particularly exclusive look to the “small-scaly” appearance of facades and roofs with their matte, elegant structure. Roof tiles are perfectly suited for both new roofing and refurbishments. With the extremely low weight of 2.3 kg/m², older intact roof trusses are perfectly able to be newly covered with ease as well. The patented fold and fixing system makes the roof and facade enormously weather-resistant.

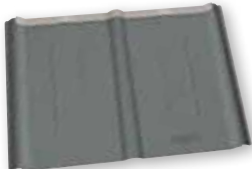


Product: PREFA roof tile
Colour: anthracite P10
Location: Choëx, Switzerland
Installation: Staub et Fils à Charrat



TECHNICAL DATA PREFA ROOF TILE

Material	coated aluminium, 0.7 mm thick, two-layer stove-enamel finish or powder coating according to RAL or NCS
Size	600 x 420 mm in the installed area
Weight	2.3 kg/m²
Roof pitch	from 12° = approx. 21 % (with a rafter length of up to 7 m) from 14° = approx. 25 % (with a rafter length of 7-12 m) from 16° = approx. 29 % (with a rafter length greater than 12 m)
Supporting construction and separation layer	on full boarding at least 24 mm or battens 30 x 50 mm from snow loads of 3.25 kN/m² (CH: reference height 925 m) or in the terrain categories 0, I or II, an installation on full boarding with bitumen separation layer is required
Fixing	2 pcs. aluminium patent holders per shingle = 8 holders per m²





ROOF RHOMBOID PANEL 44x44

The Courage to
Realize the Possible.



Product: PREFA roof
and facade rhomboid panel 44x44
Colour: light grey P.10
Montage

The Size allows the Free Play.

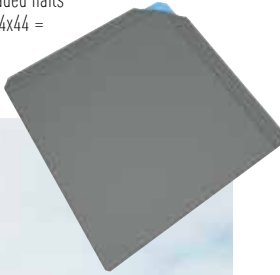
With the PREFA aluminium roof rhomboid panel in the format 44 x 44 cm, PREFA once again places its bets on a strong innovative creative impulse. The expanded surface structure allows the free interplay of traditional form and modern touches, without compromising on maximum durability and extreme weatherability. The new type of PREFA design roof rhomboid panel impresses with its minimal weight as well as its top handling efficiency: The integrated mounting brackets allow for a rapid and economical installation of the roof and facade elements.



NEW!

TECHNICAL DATA PREFA ROOF RHOMBOID PANEL 44x44

Material	coated aluminium, 0.7 mm thick, two-layer stove enamel finish or powder coating according to RAL or NCS
Size	437 x 437 mm in the installed area
Weight	2.6 kg/m²
Roof pitch	from 12 ° = approx. 21 % from 14 ° = approx. 25 % from 16 ° = approx. 29 %
Supporting construction and separation layer	on full boarding at least 24 mm; from snow loads of 3.25 kN/m² (CH: reference height 925 m) or in the terrain categories 0, I or II, an installation on full boarding with bitumen separation layer is required
Fixing	directly, 4 pcs PREFA threaded nails per roof rhomboid panel 44x44 = 20 threaded nails/m²





ROOF RHOMBOID PANEL 29x29

Uncompromising
in Aesthetics and Quality

Product: PREFA roof rhomboid panel 29x29
Colour: light grey P.10
Location: Bolzano, Italy
Architecture: Markus Vigl
Installation: Spenglerei Stuefer GmbH

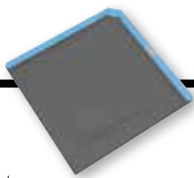


Product: PREFA rhomboid panel 20x20
 Colour: anthracite P.10
 Location: Brussels, Belgium
 Architecture: Dimitri Saerens – Aura
 Installation: A & S Dakwerken

The Solution for Your Problems Is Very Simple.

The ideal roof for special challenges: The extremely robust, small-format roof rhomboid panels are particularly storm-proof and weather-proof to the fold-in-fold technique and the special fixing system and prove their worth even under extreme conditions. With their extremely low weight of 2.3 kg/m², roof rhomboid panels are not only predestined for the use with new roofings and refurbishments, but also perfectly suited for older intact roof trusses as well. Rhomboid panel roofs are also exciting because of their elegant surface texture.

PREFA roof rhomboid panel 29x29



TECHNICAL DATA PREFA ROOF RHOMBOID PANEL 29x29

Material	coated aluminium, 0.7 mm thick, two-layer stove-enamel finish or powder coating according to RAL or NCS
Size	290 x 290 mm in the installed area
Weight	2.6 kg/m²
Roof pitch	from 22 ° = approx. 40 %
Supporting construction and separation layer	on full boarding at least 24 mm; from snow loads of 3.25 kN/m² (CH: reference height 925 m) or in the terrain categories 0, I or II, an installation on full boarding with bitumen separation layer is required
Fixing	1 pc roof rhomboid panel cleat per roof rhomboid panel 29x29 = 12 holders per m²



Product: PREFA rhomboid panel 29x29
 Colour: light grey P.10
 Location: Vienna, Austria
 Architecture: Architekturbüro Treberspurg
 Installation: Rudolf Wukitsevits





Product: PREFA roof and facade rhomboid panel 29x29
Colour: special colour
Location: Vienna, Austria
Architecture: Superblock ZT GmbH
Installation: Dachbau Zeiler

Object-based Special Solution

Customized objects often require object-based solutions to preserve the function.

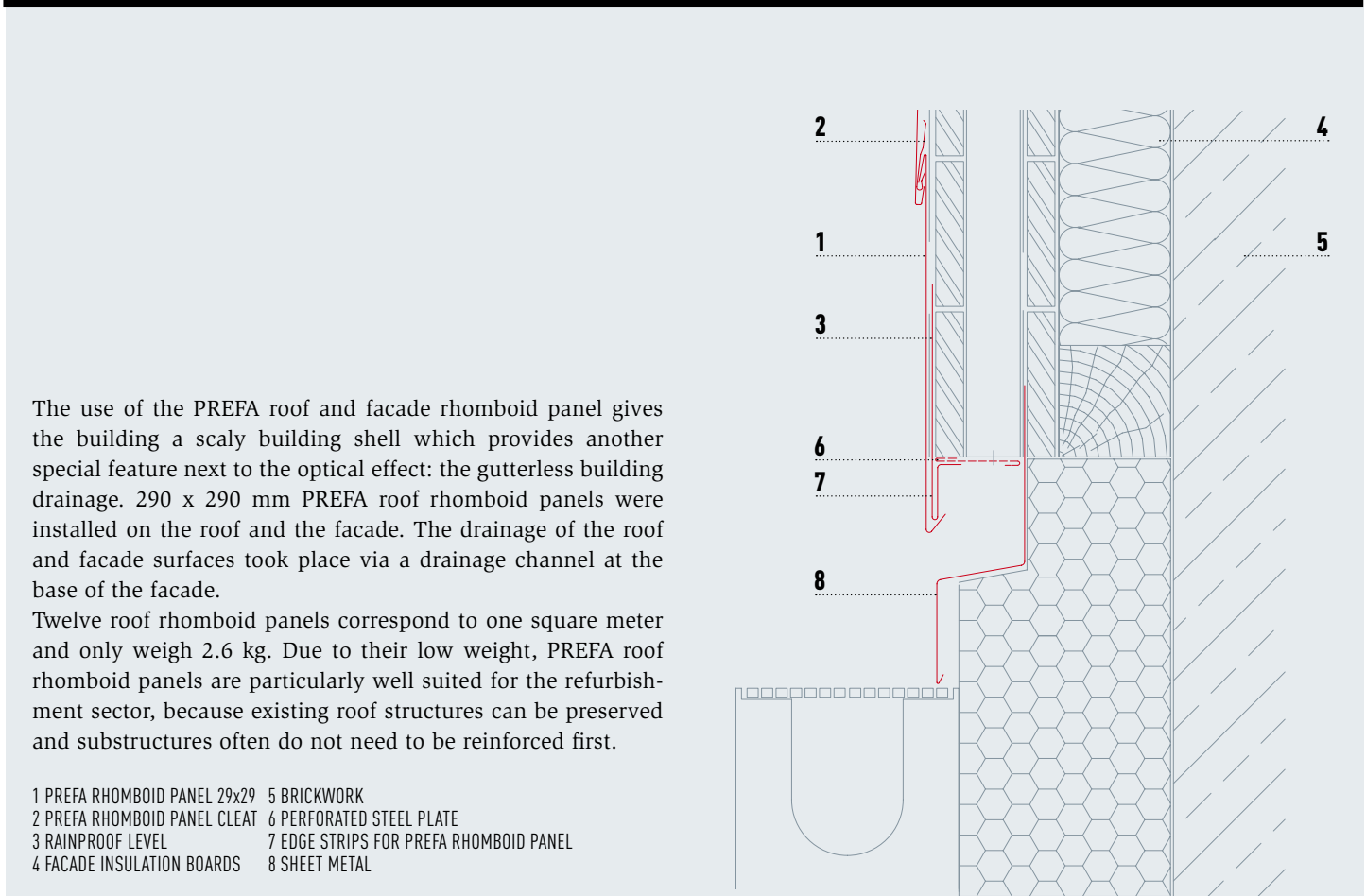
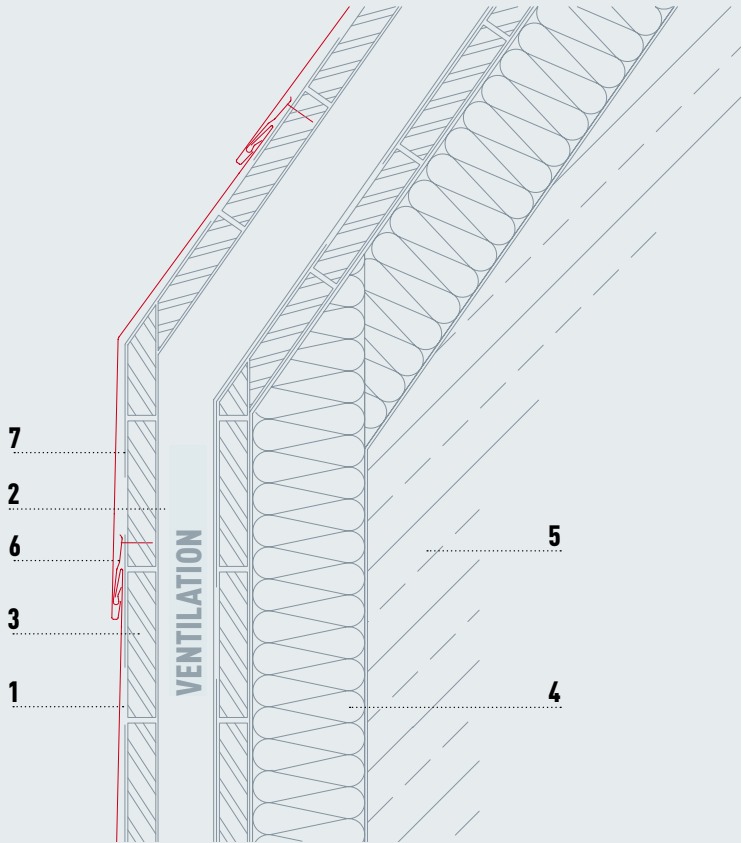
ZT Büro Superblock wanted the facade covering with the PREFA rhomboid panel which is incorporated in the roof area without visual breaks. This requires a horizontal cant of the rhomboid panel. From a technical perspective, due to the fold deformation, rain protection cannot be guaranteed over a longer period of time. However, using an object-based solution, an additional rainproof level was created under the roofing and facade covering in this case. In order to have the concept of fluent transitions also find its expression on the outside of the house, the architects relied on the roof and facade specialists PREFA.



DETAIL HORIZONTAL CANT

The PREFA roof rhomboid panel follows the current architectural trend where roof and facade beautifully blend into each other. It is not a large variety of materials that dominates the current architectural style, but a focus on one single material as much as possible. The concept and shape of the building thus find their best possible expression.

- 1 PREFA RHOMBOID PANEL 29X29
- 2 COUNTER BATTEN
- 3 FULL BOARDING AT LEAST 24 MM
- 4 FACADE INSULATION BOARDS
- 5 BRICKWORK
- 6 PREFA RHOMBOID PANEL CLEAT
- 7 RAINPROOF LEVEL



The use of the PREFA roof and facade rhomboid panel gives the building a scaly building shell which provides another special feature next to the optical effect: the gutterless building drainage. 290 x 290 mm PREFA roof rhomboid panels were installed on the roof and the facade. The drainage of the roof and facade surfaces took place via a drainage channel at the base of the facade.

Twelve roof rhomboid panels correspond to one square meter and only weigh 2.6 kg. Due to their low weight, PREFA roof rhomboid panels are particularly well suited for the refurbishment sector, because existing roof structures can be preserved and substructures often do not need to be reinforced first.

- 1 PREFA RHOMBOID PANEL 29x29
- 2 PREFA RHOMBOID PANEL CLEAT
- 3 RAINPROOF LEVEL
- 4 FACADE INSULATION BOARDS
- 5 BRICKWORK
- 6 PERFORATED STEEL PLATE
- 7 EDGE STRIPS FOR PREFA RHOMBOID PANEL
- 8 SHEET METAL

Product: PREFA roof and facade shingle
Colour: anthracite P.10
Location: Vienna, Austria
Architecture: Dipl. Ing. Markus Schuster
Installation: Schibich Hermann GmbH



SHINGLE

A Strong Roof -
Made Easy!





Product: PREFA roof and facade shingle
 Colour: brown P.10
 Location: Vienna, Austria
 Architecture: Dipl. Ing. Markus Schuster
 Installation: Schibich Hermann GmbH

TECHNICAL DATA PREFA SHINGLE

Material	coated aluminium, 0.7 mm thick, two-layer stove-enamel finish or powder coating according to RAL or NCS
Size	420 x 240 mm in the installed area
Weight	2.5 kg/m ²
Roof pitch	from 25 ° = approx. 47 %
Supporting construction and separation layer	on full boarding at least 24 mm; from snow loads of 3.25 kN/m ² (CH: reference height 925 m) or in the terrain categories 0, I or II, an installation on full boarding with bitumen separation layer is required
Fixing	1 pc PREFA patent cleat per shingle = 10 holders per m ²



As if Tailor-made for Every Project.

A roof just as flexible as your requirements: The small-format, ultra-light shingles show their strengths from the smallest surface all the way to large projects. Shingles not only prove to be extremely storm-proof and weather-proof thanks to the fold-in-fold technique and the covered fastening but are visually attractive as well. Whether new roofing or refurbishment: PREFA shingles allow you to combine the highest quality standards, function and aesthetics in an ideal manner.





ROOF PANEL FX.12

Architecture and
Design Become One.



Product: PREFA roof and facade panel FX.12
Colour: stone grey P.10
Location: La Grave, France
Architecture: Atelier 17 C – Architectes
Installation: Altibois



**THE NEW DESIGN -
SNOW RAKE SYSTEM FROM PREFA**

For all small-format roofing products - in addition to the lower overall cost, the biggest advantage of our new snow protection device is the easy installation. The snow rake system can also be retrofitted. Available in all colours for PREFA roof systems (small format).

The Art of Realizing Visionary Plans

The FX.12 roof and facade panel is an innovative, unique roof and facade element that permits a particularly futuristic surface design through its longitudinal and traverse canting. This individual look that appears even more different depending on the light makes each object unique. Two different format sizes and a correspondingly asymmetrical look allow the individual look of each house to be even further accentuated.

TECHNICAL DATA PREFA ROOF AND FACADE PANEL FX.12

Material	coated aluminium, 0.7 mm thick, two-layer stove-enamel finish or powder coating according to RAL or NCS
Size	700 x 420 mm and 1400 x 420 mm in the installed area
Weight	2.4 – 2.5 kg/m²
Roof pitch	from 17 ° = approx. 31 %
Supporting construction and separation layer	on full boarding at least 24 mm; from 17–25° a separation layer is required, from snow loads of 3.25 kN/m² (CH: reference height 925 m) or in the terrain categories 0, I or II, an installation on full boarding with bitumen separation layer is required
Fixing	directly, with 3 PREFA threaded nails 28/25 (small panel) or 5 PREFA threaded nails 28/25 (large panel)



Product: PREFA roof panel FX.12
Colour: anthracite P.10
Location: Rüsselsheim, Germany
Architecture: Architekturbüro A°10





Product: PREFA roof and facade panel FX.12
Colour: light grey P.10
Location: Berlin-Lichtenrade, Germany
Architecture: Lusin Architecture
Installation: Marco Riemelt Dachdecker GmbH

Object-based Special Solution

The building owners inherited a back country plot in Berlin-Lichtenrade that was built with a bungalow from the 60s that had a full basement. The existing building was run-down and had to be torn down, but the owner wanted to continue to use the basement.

The task of the architects now was to design a useful residential home for the building owners from the static structure of the existing basement and the strict town planning requirements.

Especially the requirement of the max. 4 m high eaves rendered the task difficult since the existing basement already protruded about 1.20 m from the grounds. The roof tilt of the 45 ° inclined gable roof thus already began with the upper edge of the finished floor of the first floor.

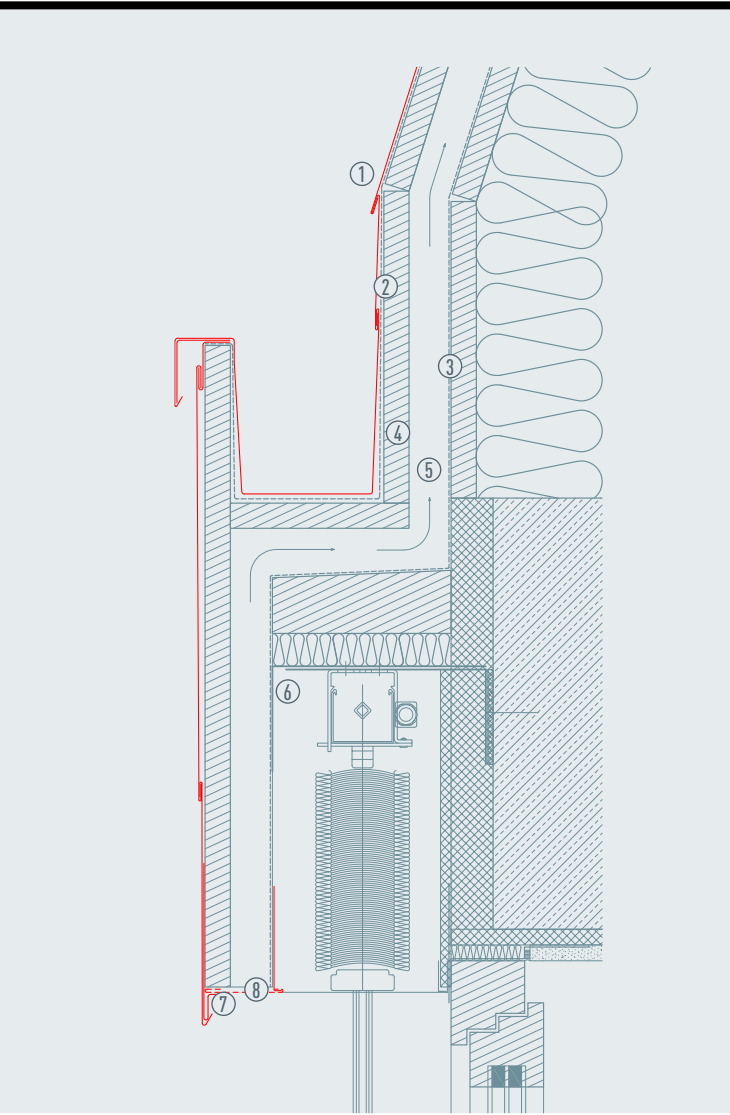
In order to still ensure good usability for the rooms on this floor, the roof area was conceptually cut along six lines, so that the dormers came into being from the extraction of the resulting cut surface, and the sculptural shape of the building emerged. Added to this was the idea of a uniform shell surrounding the building. After research and tests of various materials, a decision was very quickly made to use the roof and facade panel FX.12 for the building shell as it perfectly complemented the sculptural form of the house by its characteristic heterogeneous surface.

All design details regarding the building shell were newly developed for the house on the basis of the PREFA standard details of the roofing and facade panel FX.12 and further optimised in close collaboration between planner and installer in the course of the implementation.



DETAIL DRAINAGE

- 1 PREFA FX.12
- 2 SEPARATION LAYER
- 3 SUB-ROOF
- 4 FULL BOARDING
- 5 REAR VENTILATION
- 6 SUPPORTING MOUNTING BRACKET (MIN. 2 MM)
- 7 EDGE STRIP
- 8 PERFORATED STEEL PLATE





PREFALZ

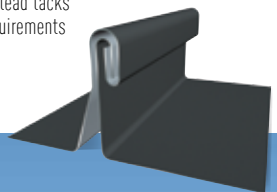
Limitless Inspiration
in aluminium.

Product: Prefalz
Colour: anthracite P10
Location: Budapest, Hungary
Architecture: Tér-Alkoto Stúdió
Installation: Ács-Bádógos-Szigetelő Kft.



TECHNICAL DATA PREFALZ

Material	coated aluminium, 0.7 mm thick, two-layer stove-enamel finish
Size	0.7 x 500 mm, 0.7 x 650 mm 0.7 x 1,000 mm supplementary strip
Weight	approx. 1.89 kg/m ² (effective consumption with 500 band about 2.3 kg/m ² , (with 650 band about 2.2 kg/m ²)
Installation	on full boarding, from roof pitch above 3° on, observe national standards and technical rules
Separation layer	we recommend the use of a suitable bitumen separating layer (local circumstances must be taken into account)
Fixing	PREFA angular standing seam lead tack cleats and angular standing seam sliding lead tacks according to static requirements



Prefalz Allows Entirely New Forms of Creativity.

Create new perspectives in creativity and longevity! Prefalz represents a unique roof and facade diversity in every respect. The smooth strips of aluminium alloy are particularly easy to mold in spite of highest varnish and surface resistance. There are no limits to the realization of your creative visions thanks to the outstanding material properties and the wide range of colours. The high-quality lacquer coating that is branded in with the coil coating process furthermore ensures a long service life and requires little maintenance.



Product: Prefalz
Colour: anthracite P.10 | light grey P.10
Location: Weiden am See, Austria
Architecture: ad2 architekten ZT KG
Installation: Peter Koch GesmbH



Product: Prefalz
Colour: light grey P.10
Location: Kővágószőlős, Hungary
Architecture: Prof. Dr. Zoltán Bachmann & Dr. Ágnes Borsos
Installation: Akos Stang



As Real as Your Dreams.

Prefalz represents an unprecedented quality of creative inspiration: The exceptional plasticity of the aluminium bands allows a wealth of innovative roof and facade solutions – without you having to forego the proverbial quality and longevity of all PREFA products. Let your creativity run wild – Prefalz will follow suit!



PREFA COLOUR RANGE

For Roof Systems

- 1

Roof tile
- 2

Roof tile R.16
- 3

Shingle
- 4

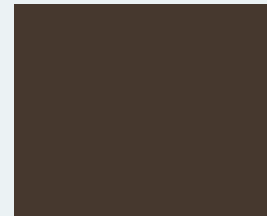
Roof rhomboid panels
29x29 | 44x44
- 5

Roof panel FX.12
- 6

Prefalz

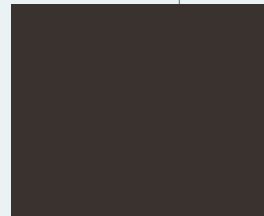
PREFA P.10

THE STRONG INNOVATION MADE OF ALUMINIUM



01 brown P.10

1 2 3 4 5 6



02 anthracite P.10

1 2 3 4 5 6

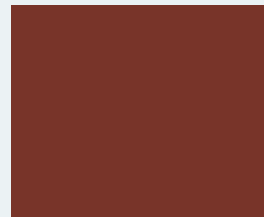


NEW!



04 brick red P.10

1 2 3 4 5 6



05 oxide red P.10

1 2 3 4 5 6



06 moss green P.10 (similar to RAL 6005)

1 2 3 4 5 6



07 light grey P.10

1 2 3 4 5 6



08 zinc grey P.10

6

NEW!



NEW!



10 prefa white P.10 (similar to RAL 9002)

6



11 nut brown P.10

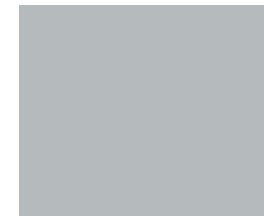
1 2 3 4 5 6

NEW!



43 stone grey P.10*

1 2 3 4 5 6



12 metallic silver (similar to RAL 9006)

6



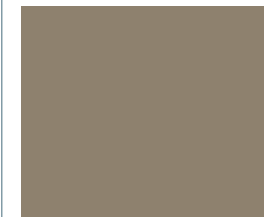
13 natural blank**

1 2 3 4 5 6



23 black grey

6



45 bronze***

6



46 Patina green*

6



47 Patina grey*

6

* The colour stone grey P.10 is modeled on a basic colour scheme and is subject to a natural fluctuation range of the colour that gives the product its distinctive character.
The same applies to the colours sand brown, rust brown, patina green, patina grey and natural blank.

** Changes to the surface appearance due to processing are not covered by the warranty. Observe the instruction sheet.

*** During the coating of metallic colours, colour differences may occur.



PREFA PRODUCT RANGE

Everything at a Glance.

ROOF AND FACADE SYSTEMS SMALL-FORMAT

PREFA ROOF TILE
FOR ROOF AND FACADE
Size 600 x 420 mm in the installed area



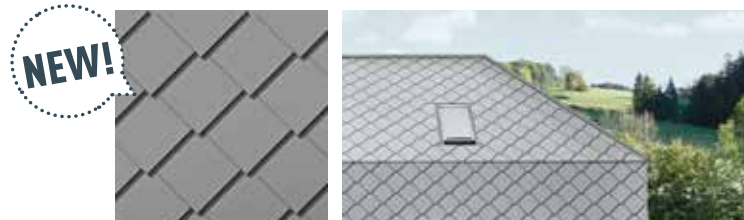
PREFA ROOF TILE R.16 NEW!
FOR ROOF
Size 700 x 420 mm in the installed area



PREFA ROOF AND FACADE SHINGLE
FOR ROOF AND FACADE
Size 420 x 240 mm in the installed area



PREFA ROOF RHOMBOID PANEL 29x29
FOR ROOF AND FACADE
Size 290 x 290 mm in the installed area



PREFA ROOF RHOMBOID PANEL 44x44 NEW!
FOR ROOF
Size 437 x 437 mm in the installed area

PREFA RHOMBOID PANEL 20x20 FOR FACADE
Size 200 x 200 mm in the installed area

PREFA RHOMBOID PANEL 29x29 FOR FACADE
SIZE 290 x 290 mm in the installed area

PREFA RHOMBOID PANEL 44x44 FOR FACADE **NEW!**
SIZE 437 x 437 mm in the installed area



PREFA ROOF AND FACADE PANEL FX.12
FOR ROOF AND FACADE
Size 700 x 420 mm and 1.400 x 420 mm



PREFA SOLAR ACCESSORIES

SOLAR MOUNTING SYSTEM AND ACCESSORIES



PREFA ALUMINIUM COMPOSITE PANEL



FOR FACADE
Size 1,500 x 4,010 x 4.0 mm

PREFA SIDING



FOR FACADE
Size 0.7 x 138 x 500 to 6,200 mm
1.0 x 200 x 500 to 6,200 mm
1.2 x 300 x 500 to 6,200 mm

PREFALZ



FOR ROOF
Size 0.7 x 500 mm, 0.7 x 650 mm

FOR FACADE
Size 0.7 x 500 mm

PREFA EXTRUSION PROFILES



PREFA PROFILE SHAFT FOR FACADE
Size 10/47/2.0 mm, width 140 mm | Weight 6.62 kg/m²

PREFA ZIG-ZAG PROFILE FOR FACADE
Size 22/40/2.0 mm, width 200 mm | Weight 7.5 kg/m²

PREFA CORRUGATED PROFILE



FOR FACADE
Size 18/76/0.7 or 1.0 mm, width 140 mm
Weight 2.3–3.3 kg/m²

ROOF DRAINAGE



COMPLETE SYSTEM
INDIVIDUAL COMPONENTS FOR GUTTER AND PIPE
Round roof gutters, box gutters, edge gutters



PREFA SQUARE PIPE
INDIVIDUAL COMPONENTS FOR GUTTER AND PIPE
Dimensions 100 x 100 mm



**THE ROOF
STRONG AS A BULL!**

THE PREFA GROUP

AUSTRIA 3182 Marktl/Lilienfeld
T + 43 2762 502-0, E office.at@prefa.com

GERMANY 98634 Wasungen
T + 49 36941 785-0, E office.de@prefa.com

SWITZERLAND 8800 Thalwil
T + 41 71 952 68 19, E office.ch@prefa.com

ITALY 39100 Bolzano
T + 39 0471 068680, E office.it@prefa.com

FRANCE 73190 Challes-les-Eaux
T + 33 4 79 44 84 58, E office.fr@prefa.com

THE CZECH REPUBLIC 19300 Prague
T + 420 234 496 501, E office.cz@prefa.com

HUNGARY 2040 Budaörs
T + 36 23 511-670, E office.hu@prefa.com

POLAND 02-295 Warsaw
T + 48 22 720 62 90, E office.pl@prefa.com

www.prefa.com

10 GOOD REASONS FOR CHOOSING PREFA

- ! **STORM-PROOF**
- ! **RUST-PROOF**
- ! **BREAK-PROOF**
- ! **LIGHT**
- ! **BEAUTIFUL**
- ! **COLOUR-FAST SURFACE**
- ! **GREAT FOR RENOVATIONS**
- ! **COMPLETE SYSTEM**
- ! **ENVIRONMENTALLY FRIENDLY**
- ! **40-YEAR GUARANTEE**



THE PREFA GROUP IS REPRESENTED IN THE FOLLOWING COUNTRIES:

Austria, Germany, Switzerland, Italy, France, Belgium, the Netherlands, Luxembourg, Denmark, Sweden, Norway, the Czech Republic, Slovakia, Hungary, Poland, Slovenia, Croatia, Estonia, Latvia, Lithuania, Russia

*The colour guarantee is a guarantee of the paint surface against splintering and blistering under the conditions specified in the guarantee certificate. You can find more information on the material and paint guarantee under www.prefa.com/Garantie
Photos: PREFA | Croce & Wir | Marion Lafogler | Werner Jäger | Hertha Hurnaus
Technical modifications and printing errors reserved. Printed colours may vary. 03.2016 | EN | JR